

COMP: SHIYA HANSTATER AS PERFORMED BY

REB ISSAC HONIG

AVROHOM CHAIM GREEN

YOELI GLICK

# AHAVTI ESHEM

♩ = 71

{INTRO}

B<sub>M</sub>

A

E<sub>M</sub>



B<sub>M</sub>

E<sub>M</sub>

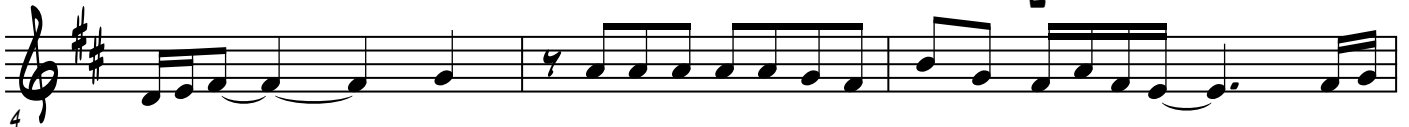
A<sub>7</sub>

D

E<sub>M</sub>

A<sub>M</sub>  
E

E<sub>M</sub>



B<sub>M</sub>

E<sub>M</sub>

E<sub>M</sub>  
C#



[A]

B<sub>M</sub>

E<sub>M</sub>

E<sub>M</sub>

F#<sub>7</sub>

B<sub>M</sub>

B<sub>7</sub>

E<sub>M</sub>



B<sub>M</sub>

F#

F<sup>o</sup>

E<sub>M</sub>

F#<sub>7</sub>



B<sub>M</sub>

F#

F#<sub>7</sub>  
E

B<sub>M</sub>

F#<sub>7</sub>

C#

B<sub>M</sub>



[B]

B<sub>M</sub>

F#<sub>M</sub>

G

A<sub>7</sub>

D

F#<sub>7</sub>



ANAVTI ESCHEN

Musical staff 1 (measures 24-26):  
 Chords: Bm, B7, Em, Em (1), Em6/C#

Musical staff 2 (measures 27-30):  
 Chords: F#7, Em6/C# (2.), F#7, Bm, (AD LIB. F# G7 F#7 F E)  $\text{♩} = 85$

Musical staff 3 (measures 31-33):  
 Chords: Bm, Bm, Em6/C#, F#, F#7, Bm

Musical staff 4 (measures 34-37):  
 Chords: F#m, Em6/C#, Bm, D, F#7, Bm

Musical staff 5 (measures 38-41):  
 Chords: Bm, A, F#m7, Bm, Bm, A, F#m7, Bm

Musical staff 6 (measures 42-43):  
 Chords: Bm, A, F#m, E, D, F#m7

Musical staff 7 (measures 44-45):  
 Chords: Bm, A, F#m7, Bm  
 Includes "RIT." marking and a fermata over the final chord.